

MITEL

## 5310 Conference Unit

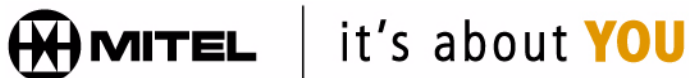
### Operation with the 5235 IP Phone



#### 5310 Conference Unit with the 5235 IP Phone

The Mitel 5310 Conference Unit comprises a saucer and a Mitel 5235 IP Phone. For information on using the 5310 Conference Unit with the Mitel 5220 IP Phone, see the reverse side.

All conferencing actions are performed using the *Conference Controller* Touch Screen 2 in the *Applications* shutter of the 5235 IP Phone.



Mitel (design) is a registered trademark of Mitel Networks Corporation. © 2005, Mitel Networks Corporation. All other products and services are the trademarks of their respective holders. All rights reserved.

**NOTE:** For more detailed information on how to use the Mitel 5235 IP Phone Touch Screen, refer to the *5235 IP Phone User Guide* available at [www.mitel.com](http://www.mitel.com), or contact your Administrator.

### Using the 5310 Conference Unit with 5235 IP Phone

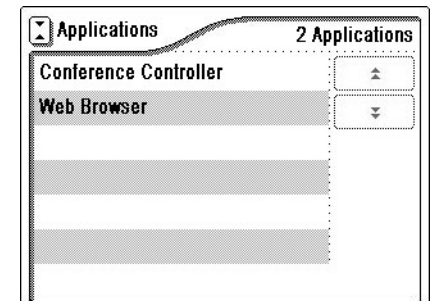
Use your stylus 1 or your finger to select *Conference Controller* Touch Screen options.  
**Note:** You cannot use the headset when using the 5310 IP Conference Unit.

#### Access Conference Controller

From the touch screen 2 Overview menu

- Press on the *Applications* shutter label to open the shutter shown at right.
- Press the *Conference Controller* label.

**NOTE:** You can program a key to quickly launch the *Conference Controller* application. Refer to the *5235 IP Phone User Guide* for details.



#### Turn the Conference Unit On or Off

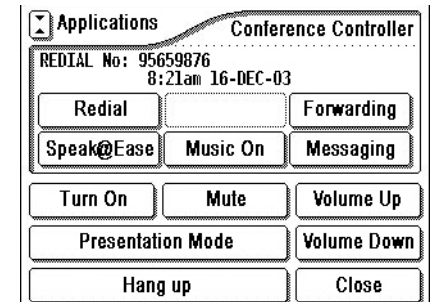
- Press **Turn On / Turn Off**. The Directional LED 3 turns on when the Conference Unit is on.

#### Adjust the Volume

- Press **Volume Up** or **Volume Down** repeatedly.

#### Turn Mute On or Off

- Press **Mute**. The LED 3 turns amber when mute is on.



#### Presentation Mode

When only one individual is speaking in a conference, use Presentation Mode to minimize extraneous noise. Disable Presentation Mode to allow other speakers to be heard.

#### Turn the Presentation Mode Feature On or Off

- Turn the Conference Unit on.
- Press **Presentation Mode**. The Directional LED 3 flashes when Presentation Mode is on.

#### Other Touch Screen Buttons

For information on other Touch Screen buttons, refer to the *5235 IP Phone User Guide*. See the note at the top of the page.

MITEL

## 5310 Conference Unit

### Operation with the 5220 IP Phone

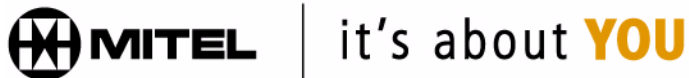


NN0153

### 5310 Conference Unit with the 5220 IP Phone

The Mitel 5310 Conference Unit comprises a saucer, a side control unit, and a Mitel 5220 IP Phone. For information about using the 5310 Conference Unit with the Mitel 5235 IP Phone, see the reverse side.

- |                     |                   |                     |
|---------------------|-------------------|---------------------|
| 1 Side Control Unit | 4 Volume Controls | 6 Presentation Mode |
| 2 Optional Remote   | 5 Mute Controls   | 7 Directional LED   |
| 3 On/Off Buttons    |                   |                     |



M Mitel (design) is a registered trademark of Mitel Networks Corporation. © 2005, Mitel Networks Corporation. All other products and services are the trademarks of their respective holders. All rights reserved.

### Using the 5310 Conference Unit with 5220 IP Phone

The following procedures can be carried out using either the side control unit 1 or the optional remote 2.

#### Turn the Conference Unit On or Off

- Press **On/Off** button 3.

The Directional LED 7 on the saucer turns on.

#### Turn Mute On or Off

- Press **Mute** 5.

The associated LED turns on/off. The Direction LED 7 on the saucer turns amber when Mute is on.

#### Adjust the Volume

- Press **Volume Up / Down** arrows 4 repeatedly.

The Direction LED 7 turns green each time you adjust the volume. This LED turns amber when the maximum or minimum volume is reached.

#### Presentation Mode

Presentation Mode is used when only one individual is speaking to a group. If another member in the group wishes to speak, disable Presentation Mode. Presentation Mode minimizes extraneous noise.

#### Turn the Presentation Mode Feature On

- Start speaking and then press **Presentation** 6 so the conference unit will pick up your voice only.

The associated Direction LED 7 turns on and starts flashing to indicate that the Conference Unit is receiving your voice.

#### Turn the Presentation Mode Feature Off

- Press **Presentation** 6 to allow other speakers to be heard during the teleconference.

The associated Direction LED 7 stops flashing.