

## General information

For information on safety instructions, cleaning, technical information or connecting to a switchboard, please refer to the 'General information' section in the full user guide at [www.bt.com/producthelp](http://www.bt.com/producthelp)

### Guarantee

Your BT Decor 2200 is guaranteed for a period of 12 months from the date of purchase.

Subject to the terms listed below, the guarantee will provide for the repair of, or at BT's or its agent's discretion the option to replace the BT Decor 2200, or any component thereof, which is identified as faulty or below standard, or as a result of inferior workmanship or materials. Products over 28 days old from the date of purchase may be replaced with a refurbished or repaired product.

The conditions of this guarantee are:

- The guarantee shall only apply to defects that occur within the 12 month guarantee period.
- Proof of purchase is required.
- The equipment is returned to BT or its agent as instructed.

This guarantee does not cover any faults or defects caused by accidents, misuse, fair wear and tear, neglect, tampering with the equipment, or any attempt at adjustment or repair other than through approved agents.

This guarantee does not affect your statutory rights.

For further information within and outside the 12 month guarantee, please refer to the full user guide at [www.bt.com/producthelp](http://www.bt.com/producthelp)

### Product disposal instructions

The symbol shown here and on the product means that the product is classed as Electrical or Electronic Equipment and should not be disposed with other household or commercial waste at the end of its working life.

The Waste of Electrical and Electronic Equipment (WEEE) Directive (2002/96/EC) has been put in place to recycle products using best available recovery and recycling techniques to minimise the impact on the environment, treat any hazardous substances and avoid the increasing landfill.

**Product disposal instructions for residential users**  
When you have no further use for it, please remove any batteries and dispose of them and the product as per your local authority's recycling processes. For more information please contact your local authority or the retailer where the product was purchased.

**Product disposal instructions for business users**  
Business users should contact their suppliers and check the terms and conditions of the purchase contract and ensure that this product is not mixed with other commercial waste for disposal.

### R&TTE Directive & Declaration of Conformity

This product is intended for use within the UK for connection to the public telephone network and compatible switchboards.

This equipment complies with the essential requirements for the Radio Equipment and Telecommunications Terminal Equipment Directive (1999/5/EC).

The Declaration of Conformity is published on the website [www.bt.com/producthelp](http://www.bt.com/producthelp)



If you ever need to remove the batteries, ensure the phone is disconnected from the phone line, turn the phone over and remove the battery compartment cover by pressing in on the plastic clip and lifting the cover off. Pull the ribbon to remove the batteries.

Press **Redial** or **Calls** to select either 12 hour or 24 hour and press **OK**. Saved is displayed. Press **Menu**. BT services is displayed. Press **Calls** to display Time Format and press **OK**.

### Set the time format (12 or 24 hour)

as dd/mm only. The current date setting is displayed with the first digit flashing. Use the keypad to enter the date using 2 digits for the day, 2 digits for the month and 2 digits for the year e.g. 21/05/11 for 21st May 2011, press **OK** to confirm. The date will be displayed

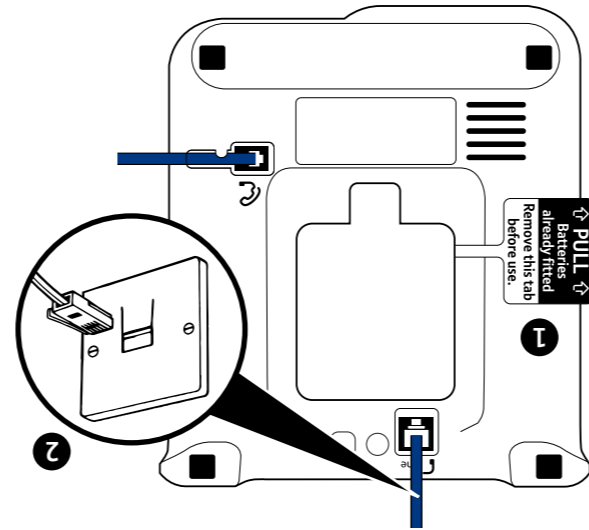
The first digit of the time flashes. Use the keypad to enter the time using 2 digits for the hour and 2 digits for the minutes and press **OK** to confirm.

Press **Menu**. BT services is displayed. Press **Calls** to display Set Time and Date, press **OK** to select.

The default time format is 24 hour but you can change this to 12 hour, see below for instructions. (Please note, you should set the time and date in the 24 hour format first before changing to the 12 hour format if required).

### Set time and date

You must plug the phone into the wall socket via an ADSL microfilter if you are using broadband on the same phone line.



1. Activate the batteries by pulling the plastic tab away from the underside of the phone.
2. Plug the end of the telephone line cord into the telephone wall socket.

## 1 Set up

## BT is a sustainability leader

To find out how we're making our products greener visit

[bt.com/betterworld/products](http://bt.com/betterworld/products)

### Offices worldwide

The services described in this publication are subject to availability and may be modified from time to time. Services and equipment are supplied subject to British Telecommunications plc's respective standard conditions of contract. Nothing in this publication forms any part of a contract.

© British Telecommunications plc 2011.  
Registered Office: 81 Newgate Street, London EC1A 7AJ.  
Registered in England No. 1800000.

Designed and produced by The Art & Design Partnership Ltd.

Printed in China / Issue 1 / ADP 08-11



## BT Decor 2200 User Guide

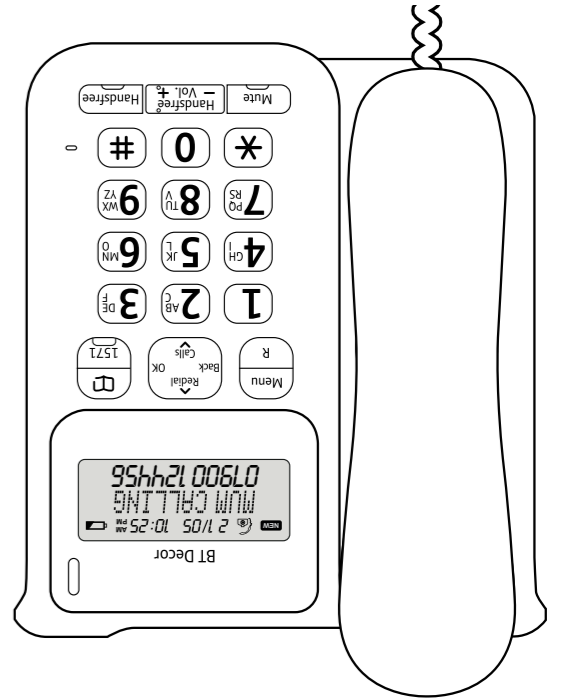
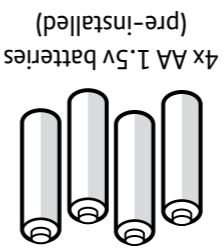


Bringing it all together

- 1 Set up
- 2 Go!



Setting up is easy. Just follow the simple steps in this guide. If you need further assistance, please visit our website [www.bt.com/producthelp](http://www.bt.com/producthelp) to view our advanced user guide

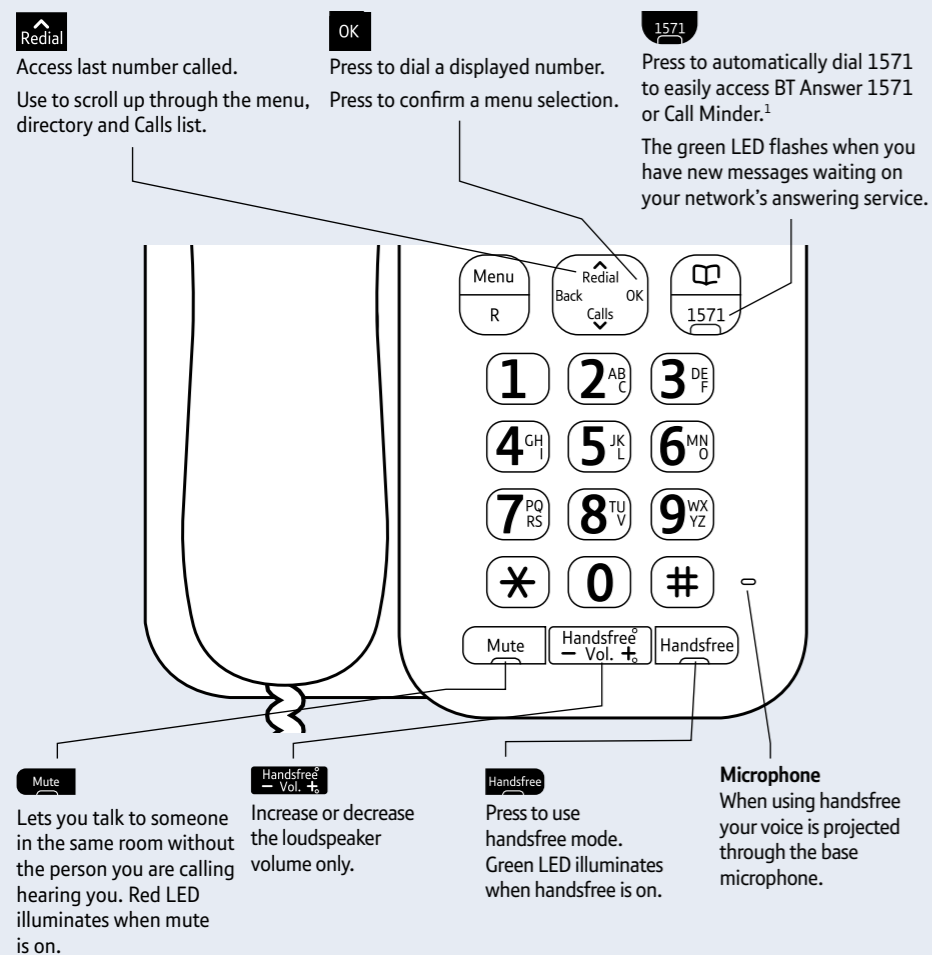
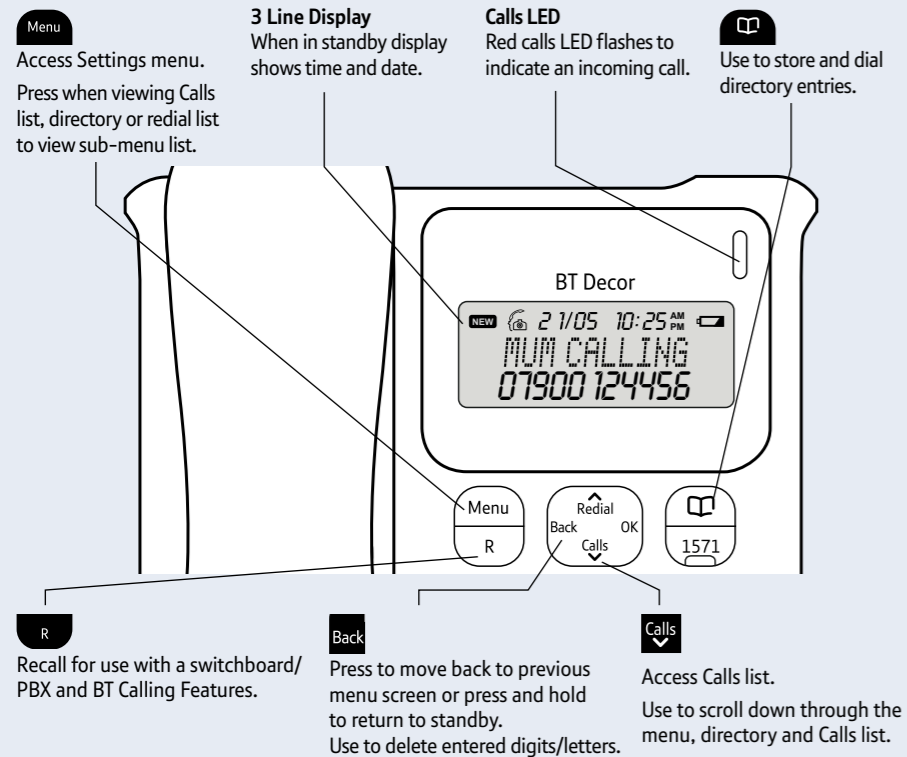


## Check box contents

BT Decor 2200 corded telephone with handset and telephone line cord attached

**Important:** Only use the telephone line cord supplied in this box, or this product may not work. Any replacement batteries must be of the same type as supplied.

# Your telephone



<sup>1</sup> To use the 1571 feature, you must subscribe to your network's answering service and batteries must be installed.

## 2 Go!

### Making calls

Lift handset and dial telephone number. To end the call, replace the handset.

### Mute

Press and release **Mute** during a call to activate mute mode. The red LED on the button will illuminate to indicate mute is on.

Press and release **Mute** again to return to your caller.

### Handsfree

Press **Handsfree** during a call. Place the handset back on the base. Continue your conversation in handsfree mode. The green LED on the button illuminates when handsfree is on.

To switch back to using the handset at any time during the call, simply lift the handset.

### Last number redial

Lift the handset (or press **Handsfree**), then press **Redial**. The last number called will be redialled.

### Directory (up to 50 entries)

#### Storing new directory entries

Press **Menu**.

If the directory is empty: **Phonebook Empty** will be displayed briefly and then **Add Entry**, press **OK**.

If there are already entries stored, the first alphabetical entry will be displayed.

Press **Menu** to display **Add New Entry** and press **OK**.

Enter the name for the entry using the keypad then press **OK**.

Enter the telephone number for the entry using the keypad then press **OK**. **Entry Saved** is displayed.

#### Dial a directory entry

Press **Menu**, then **Redial** or **Calls** to scroll to the directory entry you want.

Or, to search alphabetically:

Enter the first letter of the name you want e.g. for Emma, press **3** twice to display names beginning with E, then scroll using **Redial** or **Calls** to the name you want.

Press **OK** to dial the displayed entry.

#### Adjust the ringer volume (high, low or ringer off)

Press **Menu**. **BT services** is displayed, press **Calls** to display **Ringer volume** and press **OK**.

Current volume setting is displayed. Press **Redial** or **Calls** to change the volume level. On each button press you will hear an example ring.

With the volume you want displayed, press **OK** to confirm.

#### Select the ringer tone

Press **Menu**. **BT services** is displayed.

Press **Calls** to display **Ringer Tones**, press **OK** to select.

Press **Redial** or **Calls** to hear and display each tone.

With the tone you want displayed, press **OK** to confirm.

#### Adjust the display contrast (5 levels)

Press **Menu**. **BT services** is displayed.

Press **Calls** to display **Contrast**, press **OK** to select.

Press **Redial** or **Calls** to change the contrast level, press **OK** to confirm.

### Caller Display and the calls list

You must subscribe to a Caller Display service for this feature to work. Your network provider may charge you for this service.

#### View and dial from the calls list

Press **Calls**. Calls are listed in order from newest to oldest. **New** will be displayed if the call is new (unanswered).

If the caller's details are stored in the directory and an exact match is found, the caller's name will be displayed as well as the number.

Scroll **Redial** or **Calls** through the list.

To dial the displayed number, lift the handset or press **OK** or **Handsfree**.

### 1571 Voice mail indication

You must subscribe to a BT messaging service either BT Answer 1571 or Call Minder for this feature to work. A fee is chargeable for Call Minder.

#### Access your voice mail messages

When you've received a new voice mail message the green LED on the **1571** button light will flash.

Press **1571**. Handsfree mode will be activated and you will hear the telephone dialling out. After a few seconds you will be connected automatically to your voice mail service.

Or

Lift the handset and wait for the dial tone. Press **1571**. The number is displayed and you will hear the telephone dialling out. After a few seconds you will be connected automatically to your voice mail service.

#### Turn 1571 on or off

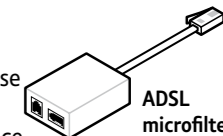
Press **Menu**. **BT services** is displayed. Press **Redial** or **Calls** to display **Message Waiting** and press **OK**.

Press **Redial** or **Calls** to select either **ON** or **OFF** and press **OK**. **Saved** is displayed.

## Help

Most problems can be fixed with a few simple checks.

Problem	Solution
No dial tone	Only use the cables supplied. Make sure the telephone line cord is plugged in correctly.
No display	Make sure the batteries are fitted correctly observing the polarity markings.
Using broadband on the same phone line?	Make sure you plug the phone into the wall socket via an ADSL microfilter (not supplied), otherwise you may have problems with this product and your broadband service.



## Find out more

- New Frequently Asked Questions available at [www.bt.com/producthelp](http://www.bt.com/producthelp)
- If you need more detailed instructions, a full user guide is available to download from [www.bt.com/producthelp](http://www.bt.com/producthelp)