

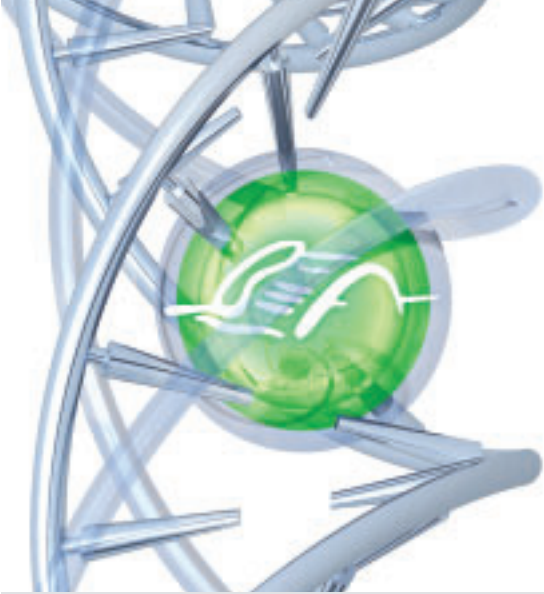
optiPoint 500 Clients

Workpoint Clients

The optiPoint 500 telephones are a family of digital terminals in a modern and attractive style for use on Realitis DX / iSDX, DXR and DX150E/R at software Revision 8, *Universality*. Ranging from the simple digital phone to sophisticated feature phones, these telephones are positioned to satisfy a wide range of business needs.

SIEMENS

Global network of innovation



Workpoint optiPoint 500 Clients

A series of options are presented to the user in an easy to manage way via the display and the three menu keys, thus enabling fast and easy access to the DX telephony features.

Benefits

- Improved staff productivity.
- Easy to use.
- Comprehensive range of telephones
- Comprehensive range of add-ons
- 2 wire digital interface
- USB interface for data and TAPI applications
- Stylish design

The following optiPoint 500 telephones are available:

optiPoint 500 entry

Cost effective entry in to digital telephony

optiPoint 500 economy

Low cost display phone with user programmable feature keys

optiPoint 500 basic

Mid range feature phone with support for additional key units, an adapter and USB port

optiPoint 500 standard

Full duplex audio transmission for high quality conference calls.

optiPoint 500 Advance

The professional choice for voice and data communications

Each telephone offers different levels of complexity. Such as:

optiPoint 500 entry

- 8 feature keys with LEDs
- Open listening (monitor)
- 2 keys for setting ringer volume/pitch and handset/speaker receive volume
- Colours: Arctic, Manganese



This is an entry level digital telephone for general use. The standard keypad is complemented by 8 pre-defined feature keys including message waiting LED.

optiPoint 500 economy

- 12 feature keys with LEDs
- Open listening (monitor)
- 2 keys for setting ringer volume/pitch and handset/speaker receive volume
- 3 dialogue keys for easy menu navigation and selection
- 2x24 adjustable display
- Colours: Arctic, Manganese



This is a low cost display phone providing the user with the ability to personalise the functions of the LED keys via an interactive menu system. The keys may be used for key system manager/secretary working or for frequently dialled numbers and other Realitis DX features. The display provides information such as caller's name or number and is used to guide the user through the menu system.

optiPoint 500 basic

- 12 feature keys with LEDs
- Open listening (monitor)
- USB interface
- 1 adapter bay
- additional key module support
- 2 keys for setting ringer volume/pitch and handset/speaker receive volume
- 3 dialogue keys for easy menu navigation and selection
- 2x24 adjustable display
- Colours: Arctic, Manganese

Extra functionality is available through the range of optiPoint 500 adapters and USB port. For instance, you could connect an additional optiPoint 500 phone, fax device or headset. Additional keys can be added via the 16 or 90 key modules.

optiPoint 500 standard

- 12 feature keys with LEDs
- Full duplex handsfree
- USB interface
- 1 adapter bay
- additional key module support
- 2 keys for setting ringer volume/pitch and handset/speaker receive volume
- 3 dialogue keys for easy menu navigation and selection
- 2x24 adjustable display
- Colours: Arctic, Manganese

Offers the same functionality as the basic model plus full duplex handsfree talking.

optiPoint 500 advance

- 19 feature keys with LEDs
- Full duplex handsfree
- Headset port
- USB interface
- 2 adapter bays
- additional key module support
- 2 keys for setting ringer volume/pitch and handset/speaker receive volume
- 3 dialogue keys for easy menu navigation and selection
- 2x24 adjustable display with background lighting
- Colours: Arctic, Manganese



This is a top of the range feature phone with 19 programmable keys, built-in headset port, an option for 2 adapters and a backlit display.

16 key module

The optiPoint 500 16 key module is an add on device with 16 keys each with an LED. It provides 32 additional number/feature stores using the Shift key on the phone. Up to two modules may be connected to the optiPoint 500 Basic, Standard or Advance.

90 key module

The optiPoint 500 90 key module is an add on device with 90 keys each with an LED. It provides 180 additional number/feature stores using the Shift key on the phone. A single module may be connected to the optiPoint 500 Basic, Standard or Advance.

optiPoint 500 privacy module

The privacy module provides protection against telephone tapping. Also suitable for use on numerous digital and analogue handsets.

Adapters

The optiPoint 500 adapters are fully encapsulated, slide-in modules which can be installed and removed easily on the underside of the Basic, Standard and Advance telephones. This enables the terminals to be adapted quickly and easily to accommodate specific workplace and organisational changes.

optiPoint 500 phone adapter

The optiPoint 500 phone adapter enables the additional optiPoint 500 telephone to be connected to the system without the need for additional cabling. The telephones can be reached simultaneously via independent numbers.

optiPoint 500 ISDN adapter

The optiPoint 500 ISDN adapter enables standard basic rate ISDN terminals (e.g. PC with ISDN SO card or video card) to be connected.

optiPoint 500 acoustic adapter

The optiPoint 500 acoustic adapter allows the following telephone accessories to be connected:

- active loud speaker and desk microphone
- headset
- busy display / door opener
- secondary bell / visual paging

optiPoint 500 analogue adapter

The optiPoint 500 analogue adapter allows the connection of an additional analogue terminal (e.g. group 3 fax machine, PC with modem card, cordless phone).

optiPoint 500 recorder adapter

Offers a connection for a recording device for recording important calls, plus an earphone interface for monitoring of calls.

optiPoint 500 PNT-E ISDN adapter

The ISDN adapter box PNT-E (Private Network Termination Evolution) enables remote data terminals, PCs, video equipment, Group 4 fax and ISDN telephones to be connected at competitively low cost.

USB interface

The Basic, Standard and Advance have a built-in USB port that may be used for CTI and data applications.

Accessories

The following accessories may be added to the optiPoint 500 telephones to enhance their performance and to tailor them for personal use.

Headsets

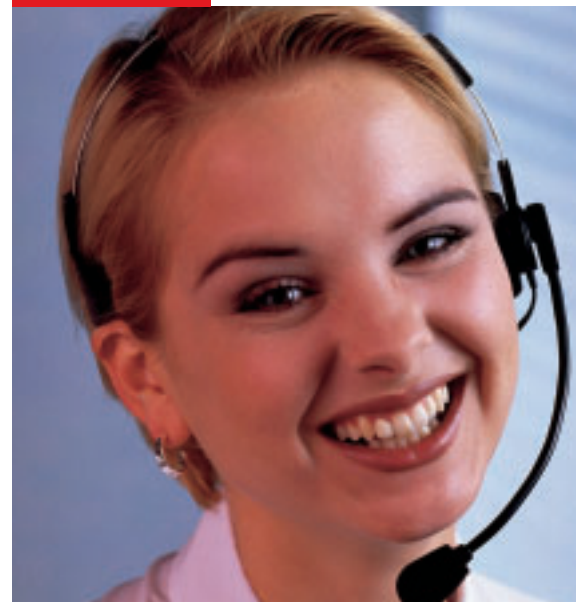
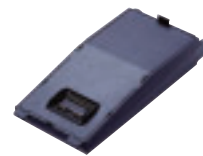
The headset replaces the telephone handset leaving both hands free when making a call. This is particularly important for users with high calling rates. The following headsets can be connected to the optiPoint 500 acoustic adapter and the optiPoint 500 Advance:

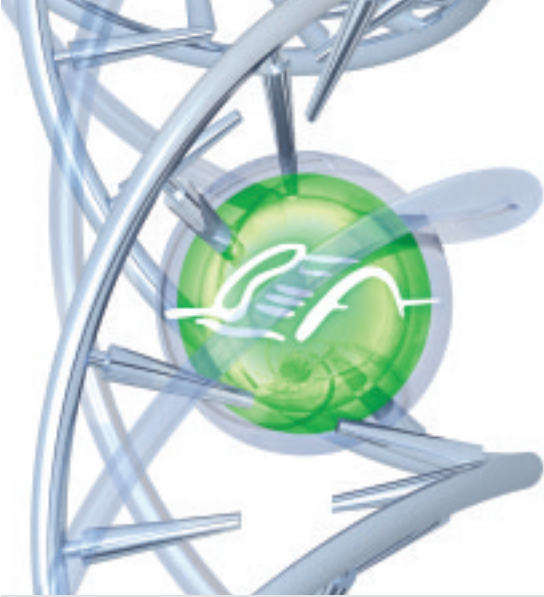
- Encore monaural
- Encore binaural
- Tristar
- Supra
- DuoSet
- Profile monaural
- Profile binaural

Desk Microphone

The desk microphone replaces the microphone integrated in the telephone. It helps make optimum use of 'hands free talking' under difficult acoustic conditions and allows greater freedom of movement while using the telephone. An illuminated LED indicates that the microphone is activated. The microphone can be deactivated by pressing the mute key.

Dimensions: (HxWxD) in mm 25 x 68 x 77





Workpoint
optiPoint 500 Clients

Active loudspeaker

The active loudspeaker supplements the loudspeaker integrated in the telephone. It improves the acoustic quality and is particularly suitable for telephone conferences. The loudspeaker is also a popular accessory for individual offices of senior staff.

Dimensions: (HxWxD) in mm 160x100x95

Second earphone

A second earphone (listen only) can be connected to the Recorder adapter to enable a second person to listen to a conversation.

ACD working

An alternative key layout for ACD working can be configured on the optiPoint 500.

Overview of features

fig.1:

optiPoint 500 telephone	Entry	Economy	Basic	Standard	Advance
Feature keys with LED	8	12	12	12	19
12 key dial keypad	•	•	•	•	•
2 audio control keys	•	•	•	•	•
Open listening	•	•	•		
Full duplex hands-free				•	•
Adapter bays			1	1	2
USB 1.1 interface			•	•	•
Headset port					•
3 menu keys		•	•	•	•
Display (characters)		2x24	2x24	2x24	2x24
ACD working			•	•	•
Interface for key modules			•	•	•
Backlit display					
Wall mounting	•	•	•	•	•
Hearing aid compatible	•	•	•	•	•
Arctic (colour)	•	•	•	•	•
Manganese (colour)	•	•	•	•	•
Height (mm)	64	68	68	68	68
Width (mm)	159	214	214	214	214
Depth (mm)	220	220	220	220	220

Siemens Communications is one of the UK's leading communications suppliers, offering a full choice of technology and service solutions from simple telephony through to full network outsourcing, incorporating the Customer Relationship Management and e-business environments. The company operates centres of competence for research, development, manufacture and support throughout the UK and in a number of international markets. It has a turnover in excess of £300 million and is part of Siemens Information and Communication Networks, the global leader in business communications.



realitis.siemens@siemenscomms.co.uk
Freephone 0800 512412

www.realitis-dx.com

Siemens Communications
Brickhill Street, Willen Lake, Milton Keynes. MK15 0DJ
Tel. 01908 855000 • Fax. 01908 855001

Publication No. 1QHA 50575 AAA-CAA • Issue 01



FS 261

The information provided in this document contains merely general descriptions or characteristics of performance which in case of actual use do not always apply as described or which may change as a result of further development of the products. An obligation to provide the respective characteristics shall only exist if expressly agreed in the terms of contract. Availability and technical specifications are subject to change without notice. © Siemens plc 2002. All rights reserved. Siemens Communications, a division of Siemens plc. Siemens and HiPath are trademarks of Siemens AG. Realitis DX is a trademark of Siemens plc.